

INSULATING BRICK – TYPE – C (TYC):

- Items covered – TSR-1, TSR-2, TSR-3, TSF-2, TSF-3, TSP-1, LBT-1, LBT-2, LBT-3

Al₂O₃ : 30% Min
Fe₂ O₃ : 4% Max
CCS Kg/sq.cm : 15 Min.
Deg.C for 2 hrs : +/- 1.50% Max
Service Temp. 1200 Deg.C Max

FIREBRICK – TYPE – B (TYB):

- Items covered – TSF-1

Al₂O₃ : 32 -37%
SiO₂ : 60% (max)
PCE (OC) : 30 min
AP% : 25 app.
CCS Kg/sq.cm : 130 Min.
PLCR for 2 hrs : +/- 1.50% at 1400 Deg.C:
B.D. gm/cc : 1.9-2.1

INSULATING BRICK – TYPE – H:

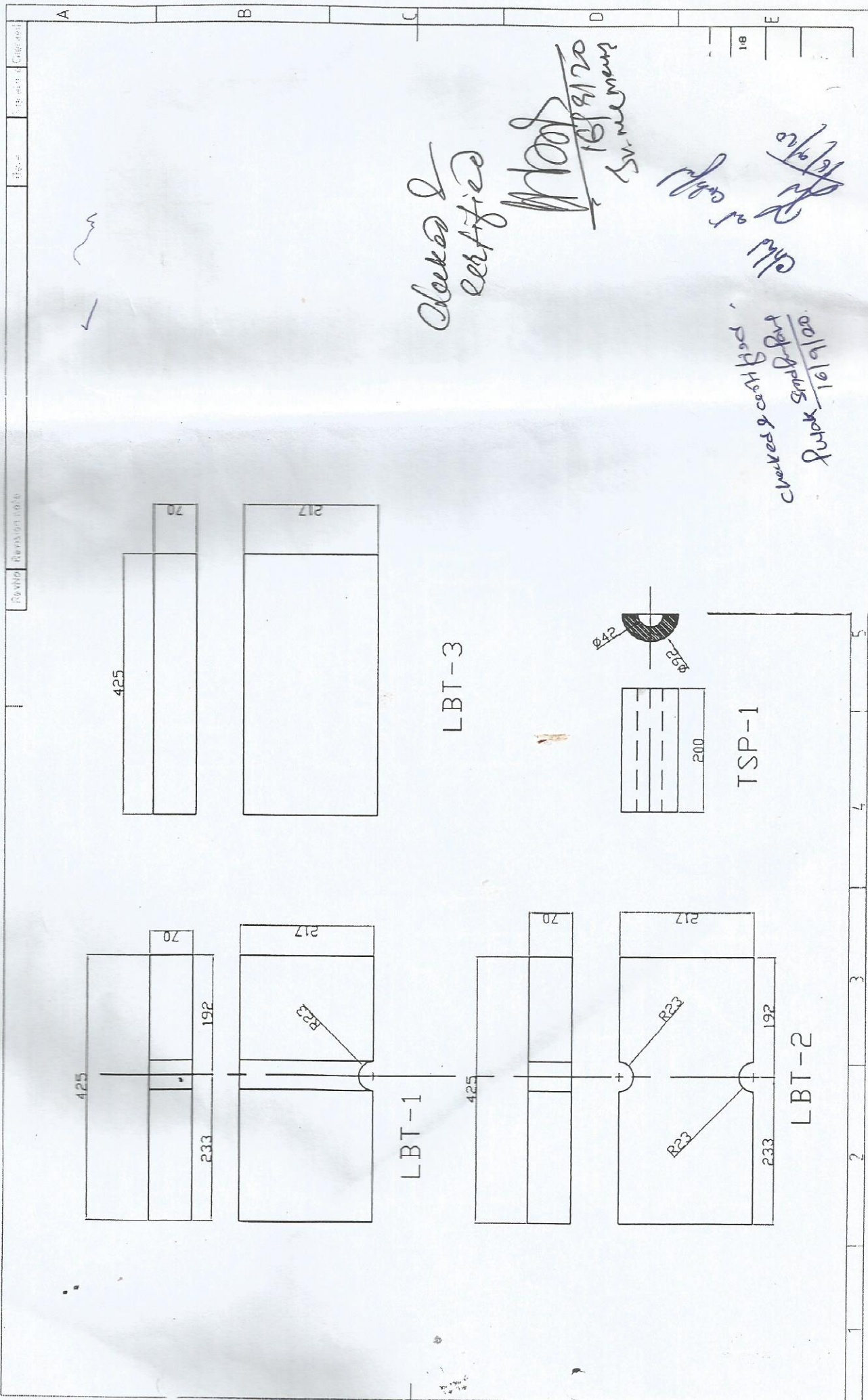
CCS : 20 to 30 Kg/ sq. cm
Service Temperature : 1300 °C
PLC : 2% max at 1250 °C for 2 Hrs.

- 1) Technical Specification for Type-C (TSR-1, TSR-2, TSR-3, TSF-2, TSF-3, TSP-1, LBT-1, LBT-2 & LBT-3 Insulation Bricks
- 2) Technical specification for Type-B (TSF-1) Fire Bricks.
- 3) Technical specification for Type-H Insulating Bricks.

Checked & certified
[Signature]
16/9/20

Checked & certified
Pankaj Singh
16/9/20

[Signature]
16/9/20
Sr. Manager



Checked & certified

Moos
16/9/20
Sr. member

Chk of copy
16/9/20

checked & cert. Moos
16/9/20

LBT-3

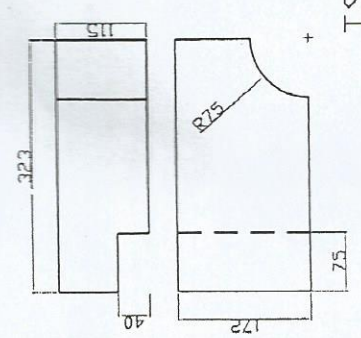
TSP-1

LBT-1

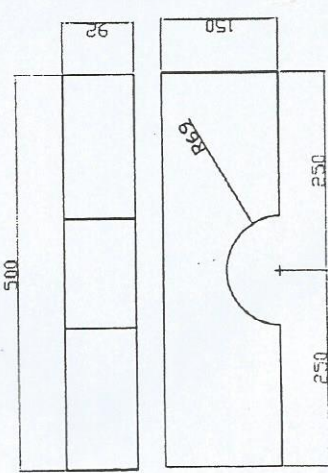
LBT-2

Revise	Revision note	Date	By whom	Checked

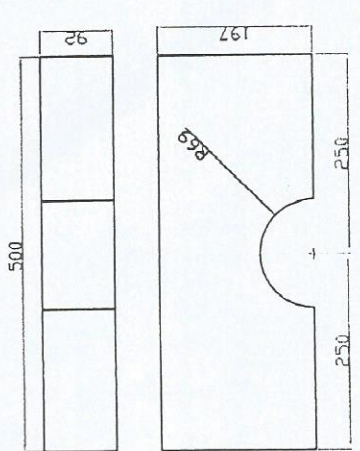
Rev No	Revision note	Date	Signature	Checked
A				
B				
C				
D				
E				



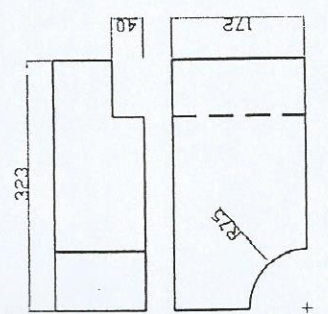
TSF-1



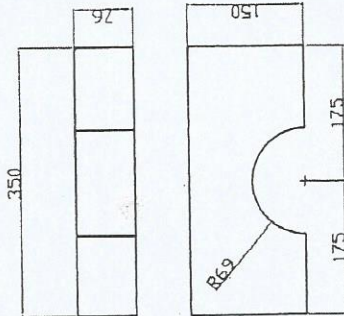
TSF-2



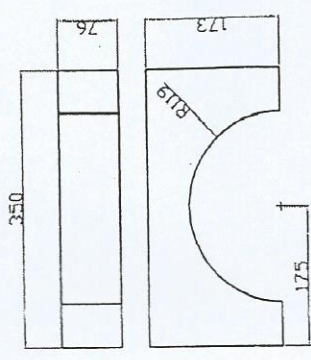
TSF-3



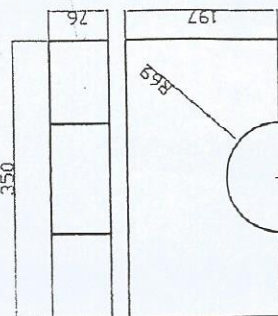
TSR-3



TSR-1



TSR-2



TSR-3

Checked & certified

[Signature]
16/9/20
Sr. Mechanic

Checked & certified. *[Signature]*
16/9/20
Sr. Mechanic